

# Fall-arrest device Ratchet stopper Longer stroke

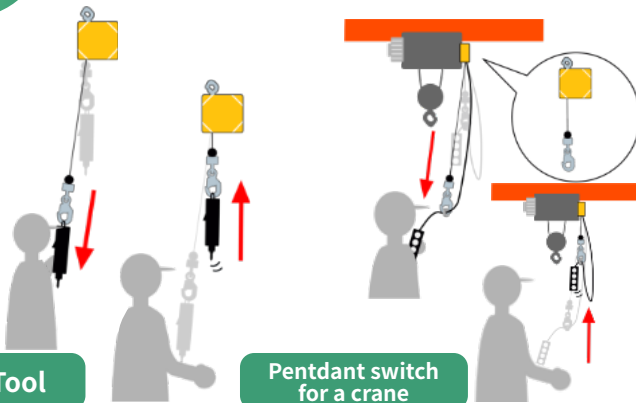
# Retractor



## Various applications

1

Suspending various tools and equipment



Tool

Pendant switch for a crane

2

Using the spring tension as a driving force for the other application.



Holes for the auxiliary wire rope

Faces for installing

Removable hook

ERL Series

**ENDO**

# Features



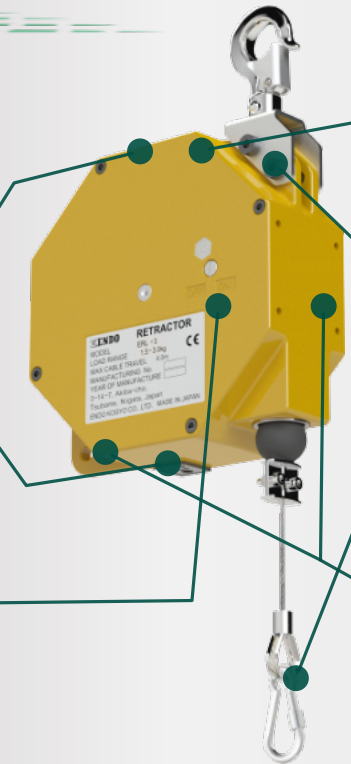
There are 2 holes for spring tension adjustments.

## Easy adjustment

It needs only a Hex-key to adjust the spring tension.

## Ratchet stopper

A ratchet stopper device is equipped. It stops the stroke and locks the suspension position. When you do not need the stopper function, you can turn it off.



## Fall-arrest device

Fall-arrest device is equipped on ERL-6S, 8S, 11S and 14S models.

## Removable hook

The top hook and the bottom hook are removable without disassembling the retractor body.

## Holes and faces for the fixed position

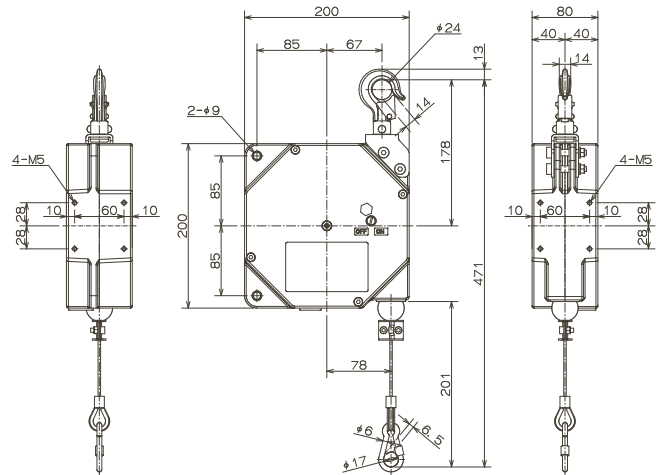
There are 2 holes and 2 faces for installing the retractor into a fixed position.

## Specification

Model	Fall-arrest device	CE	Capacity (kg)	Wire rope travel (m)	Mass (kg)
ERL-3	-	✓	1.5-3.0	4.0*	3.8
ERL-6	-	-	3.0-6.0	4.0*	4.4
ERL-8	-	-	5.0-8.0	4.0*	4.8
ERL-11	-	-	8.0-11.0	4.0*	5.1
ERL-14	-	-	11.0-14.0	4.0*	5.1
ERL-6S	✓	✓	3.0-6.0	4.0*	4.4
ERL-8S	✓	✓	5.0-8.0	4.0*	4.8
ERL-11S	✓	✓	8.0-11.0	4.0*	5.1
ERL-14S	✓	✓	11.0-14.0	4.0*	5.1

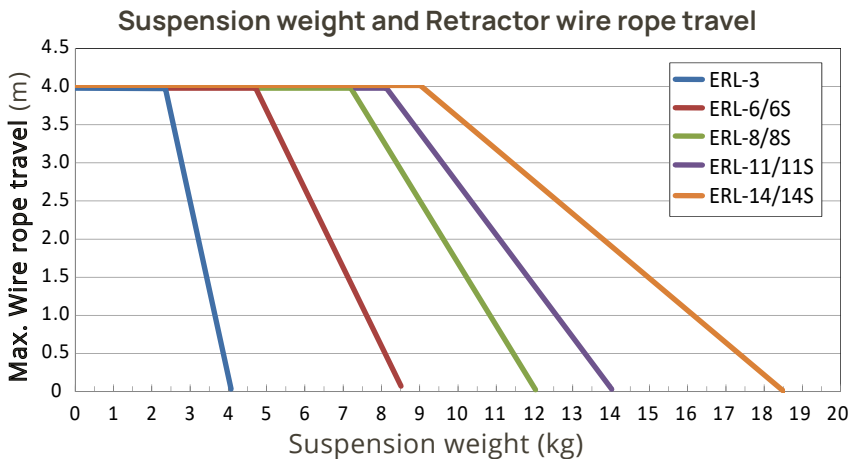
\*Wire rope travel is relative to the setting of the spring tension.

## Dimension



## Wire rope travel

Maximum wire rope travel is relative to the setting of the spring tension.



This graph shows the wire rope travel from the factory set position. This graph is a reference for straight up and down operation.